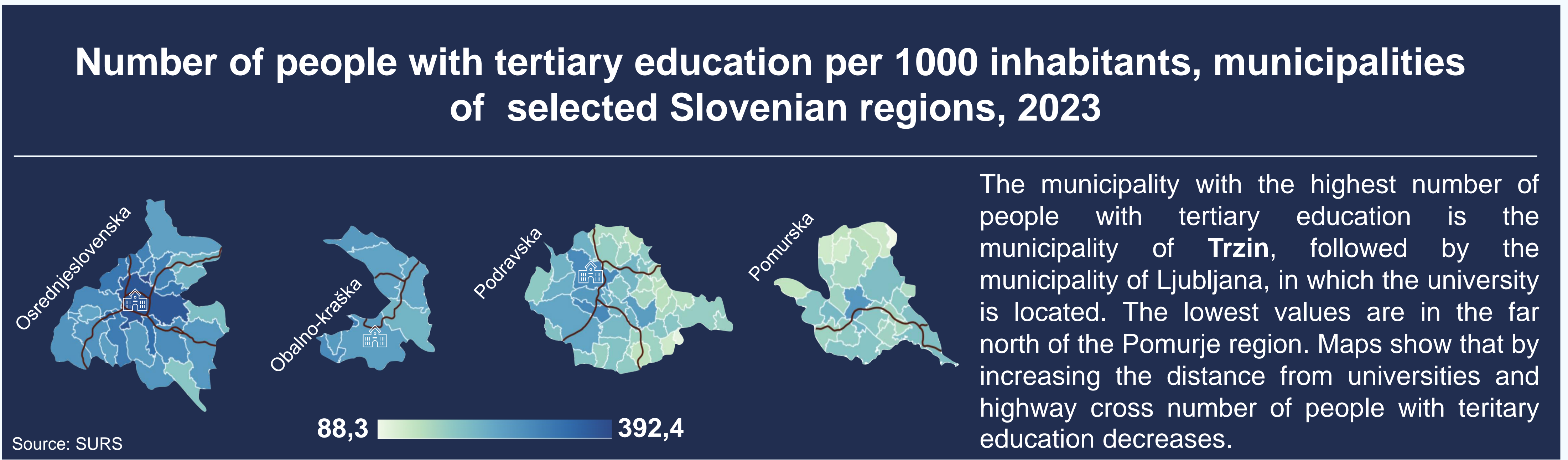
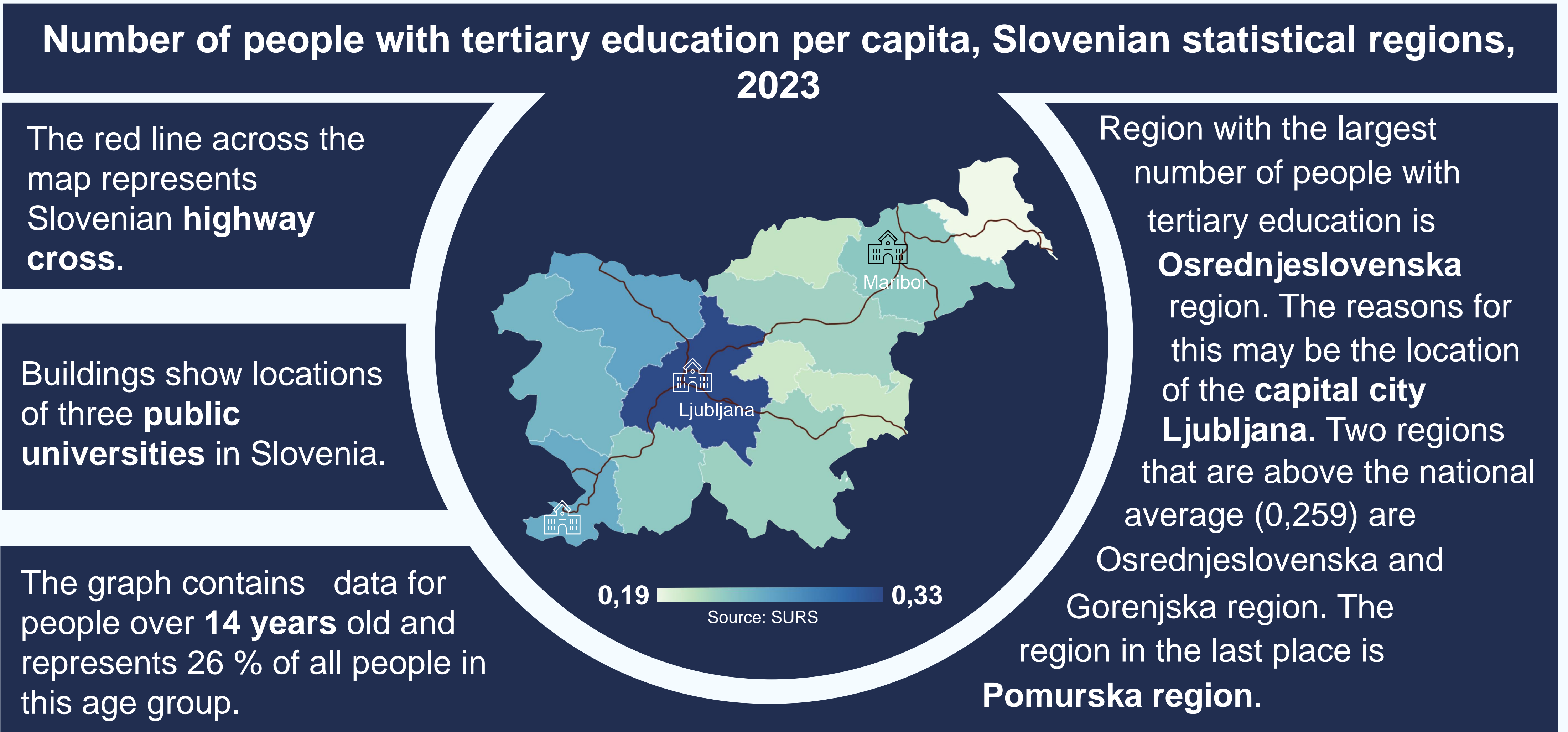


DOES THE PROXIMITY OF THE UNIVERSITY AFFECT THE LEVEL OF EDUCATION?

- GOALS:
- Present data about tertiary education for each region and for chosen municipalities
 - Compare different levels of education



The standard deviation for secondary and primary education is 0.02 and for tertiary education 0.04. **Reasons for that can be:** There are many more primary and secondary schools than colleges. They are located in almost every town and village. As a result, everyone has equal access to these. However, the faculties are located only in centralized centers, so their access is not as uniform to all residents.

- CONCLUSIONS:
- The proximity of an university **affects** level of education. Regions with universities and good traffic connections are in the top half of most educated regions.
 - Numbers of people with lower education are more similar, since those facilities are more accessible to all.

